

DEVINE



Artis 10A

Powered speaker

Introduction

Thank you for purchasing this passive Devine Artis speaker. To make sure you use this loudspeaker as intended and for optimal performance and protection of this speaker, Devine recommends you read this user manual.

Box contents:

1x Artis 10A Powered loudspeaker
2x monitor stands
1x power cable

Warning!

- This loudspeaker is not suitable for use outside. Keep this speaker away from moisture and rain.
- This loudspeaker is capable of producing sound levels that may cause severe and permanent hearing damage.
- Make sure the speaker cabinet is installed on a proper surface when used. Place this speaker on the floor, on a professional speaker stand, on a suitable wall-bracket or on the included monitor feet. Devine is not responsible for any damage caused by improper installation of this device.
- This speaker is equipped with M8 mounting inserts, but this device is not intended to be rigged with these points. When doing so, contact a skilled technician for your own safety and only use proper eyebolts with metric thread. Devine does not take responsibility when this device is not properly installed.
- To clean this speaker from any dirt or dust and keep it in optimal shape, use a sponge or cloth with a non-aggressive solution mixed with water. Do not detach the grill to clean the speaker with any wet cloth, as this may cause permanent damage!
- Always check the voltage settings on the unit and the power supply you want to connect the device to. If the voltage requirements do not meet, do not connect the device as this may cause serious damage.
- This unit must be connected to a grounded power supply that meets the voltage requirements of the device.
- Do not cover the heatsink on the rear of the amplifier module and do not place the speaker directly against any walls or objects to prevent overheating.

Features and technical data:

- powered speaker
- robust, lightweight construction
- bass-reflex cabinet
- protective grill
- 10 inch woofer
- 1 inch tweeter with dispersion horn
- impedance: 8 Ohm
- handle on the side
- 35mm stand adapter with tightening knob
- monitor stands included
- frequency response: 55 – 18.000 Hz (-10 dB)
- sensitivity: 94 dB (+/- 2 dB)
- size: 360 x 270 x 520 mm
- weight: 10 kg

Amplifier module features:

- power: 150W RMS
- peak power: 450W RMS
- amplifier impedance: 4 Ohm
- passive speaker connector through 6.35mm jack connector
- minimum impedance passive speaker: 8 Ohm
- built-in Clip and Power LED indicators
- built-in USB/SD MP3-player with volume control
- microphone input through balanced XLR or unbalanced 6.35mm jack connector with volume control
- line input: balanced XLR and unbalanced stereo RCA connectors with volume control
- line output: balanced 6.35mm jack connector
- built-in equalizer with bass and treble control
- master volume control
- IEC to Shucko power cable included

NOTE: Illustrations in this manual are only for your reference, illustrations might be slightly different from the actual product.

DEVINE

Use of the speaker

This speaker is designed to perform in professional environments. Either speech, music, or any other type of sound can be played through this speaker.

The Artis A-series are equipped with their own power amplifier, mounted on the rear of the speaker. This module also houses the internal USB/SD MP3-player and the several connections + volume controls.

The built-in power amplifier is capable to produce enough power for the speaker alone, but for specific situations it is possible to connect a passive Artis 10 speaker for better sound dispersion (e.g. for presentations and other low-volume applications). Take notice that the maximum power of the amplifier will slightly decrease, because it has to provide power to two speakers on a low impedance.

The built-in USB/SD MP3-player supports most USB-thumbdrive and SD(HC)-cards. However, the results of some models may vary as many manufacturers have their own standards. The display shows track information and with the silver buttons you are able to browse through your data. It is not possible to mix the USB- and SD-slot, only one at a time can be used.

Make sure you connect the right audio sources to the right inputs. The mic input is suitable for most microphones, but does not supply phantom power, if your microphone requires that. The line input is suitable for RCA-sources (MP3-players, laptops, smartphones, tablets) and can also be used with an adapter cable to a 3.5mm jack (not included). A XLR-connector is provided for professional audio sources, such as DJ or PA mixers, electronic keyboards and so on. The line output is used to connect a second speaker, such as another Artis 10A. The speaker output is only suitable for passive speakers, such as the Artis 10. Contact your local dealer when in doubt, as a wrong connection may cause permanent damage.

This speaker comes with two monitor stands, which makes horizontal positioning possible. This feature is often used when the speaker needs to perform as a floor monitor for artists.

Mount the monitor stands as illustrated below:

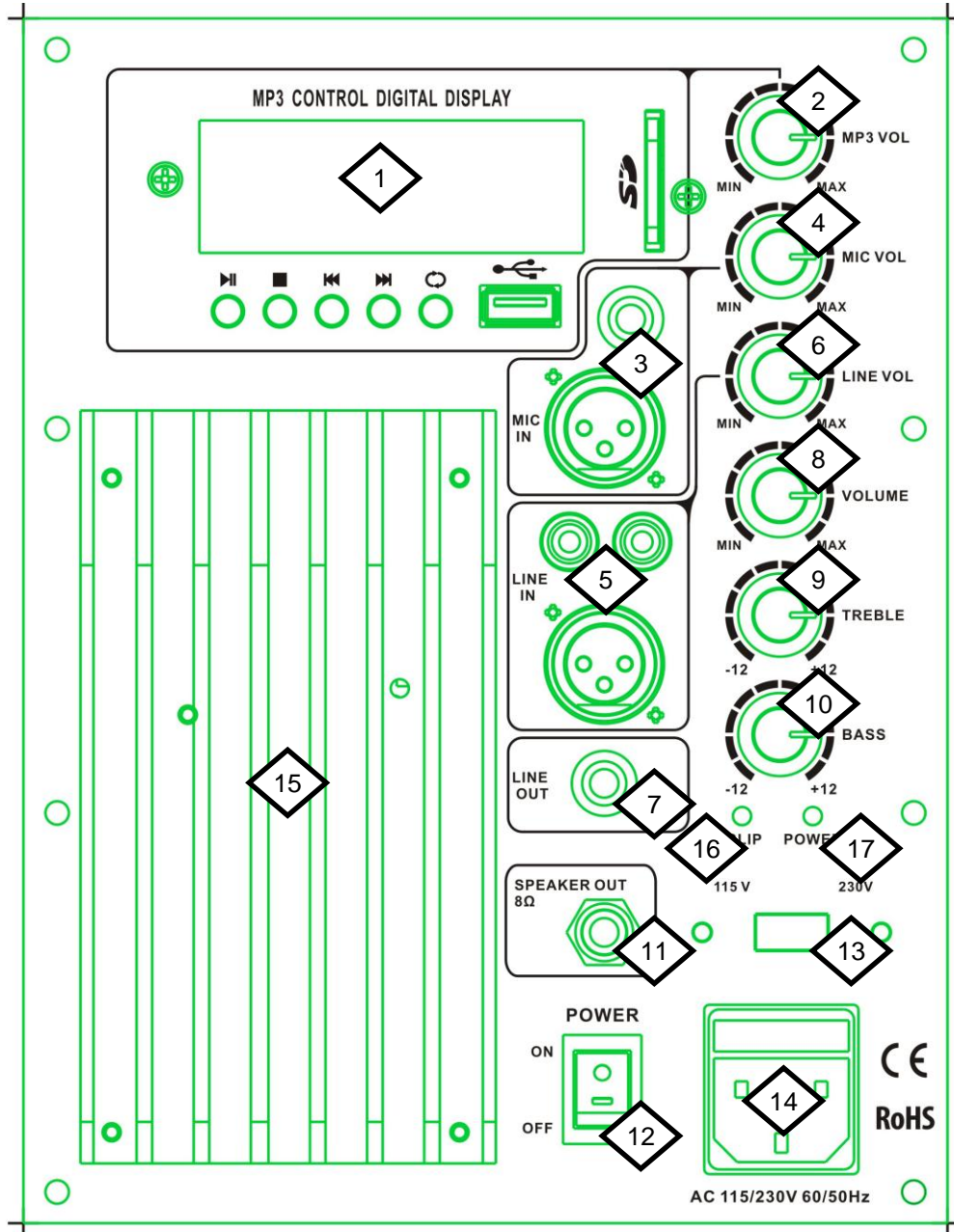


This speaker is also equipped with a lockable 35mm stand adapter, which makes it possible to place the speaker on a suitable height. This makes the distribution of high and mid-frequencies easier. See the image above for details. The lockable screw-knob positions the speaker firmly on your speaker stand, thus preventing any type of resonance.

Warranty is void when damage to this speaker is caused by improper use. When any damage to this speaker occurs, please contact your local dealer for help.

Power amplifier module section

The built-in power amplifier module, combined with the built-in MP3-player, connectors and volume controls, has several options. A short explanation for each feature is described below:



1. MP3-player with USB and SD slot	10. Equalizer: Bass control (-12 to +12)
2. MP3 volume control	11. Speaker output (6.35mm jack)
3. Microphone input (6.35mm jack or XLR)	12. Power on/off switch
4. Microphone volume control	13. 115/230V switch (pre-defined, do not
5. Line input (stereo RCA or XLR)	14. IEC power input with fuse holder
6. Line input volume control	15. Amplifier heatsink
7. Line output (6.35mm jack)	16. Clip LED indicator
8. Master volume control	17. Power LED indicator
9. Equalizer: Treble control (-12 to +12)	

Practical information and tips for optimal use of your speaker system

For optimal performance and a long lifespan of your speaker, please pay attention to the following when using your Devine speaker:

- This speaker is equipped with a CLIP limiter, which prevents damage to the speaker. This CLIP limiter will activate at excessive volume levels and a red LED shows when the CLIP limiter is active. Prevent the activation of the CLIP limiter system and the indicating LED. The CLIP limiter protects the system from permanent damage, but is only effective at peak signals. Long term exposure causes distortion and power overload, with possible permanent damage to your speaker system.
- When using an external mixer (such as a PA-mixer or DJ-mixer, make sure your master channel sends out signals at 0dB maximum. This will provide optimal signal quality and with the volume control on the speaker you are able to turn up the volume, just before the CLIP limiter LED will slightly flash. This way you are using the speaker to its full potential with optimal sound quality.
- When using the internal two-band equalizer system and adjusting the sound balance of your speaker, keep the master volume on a medium, neutral level which is comfortable to your ears. When you want to add extra bass, try to decrease the Treble-intensity first. When you want to add more high frequencies (for vocal and speech applications), try to decrease the bass level first. This way, the EQ system does not have to function as a pre-amplifier, thus providing optimal sound quality.
- Do not remove the protective cover in front of the voltage-switch. The correct voltage is pre-defined at 230V AC. When selecting the wrong voltage you may cause permanent damage to the speaker and its internal components. Only select the 115V AC option when your local power source is capable of delivering this voltage.
- Do not switch the power on and off frequently as this reduces the lifespan of the speaker and its internal components. The speaker can be used for a whole day without any cooling-down time, if sufficient cooling is provided.
- The speaker is equipped with an internal fuse, located directly above the IEC power input section. If this fuse blows for any reason, only replace it with a fuse that has the same values as the original fuse. Do not bridge the gap with any electrical wiring or whatsoever as this voids warranty.
- Severe shocks and impact must be prevented as much as possible. Secure this speaker properly in place during transport to prevent damage to the housing and the internal components of the speaker.